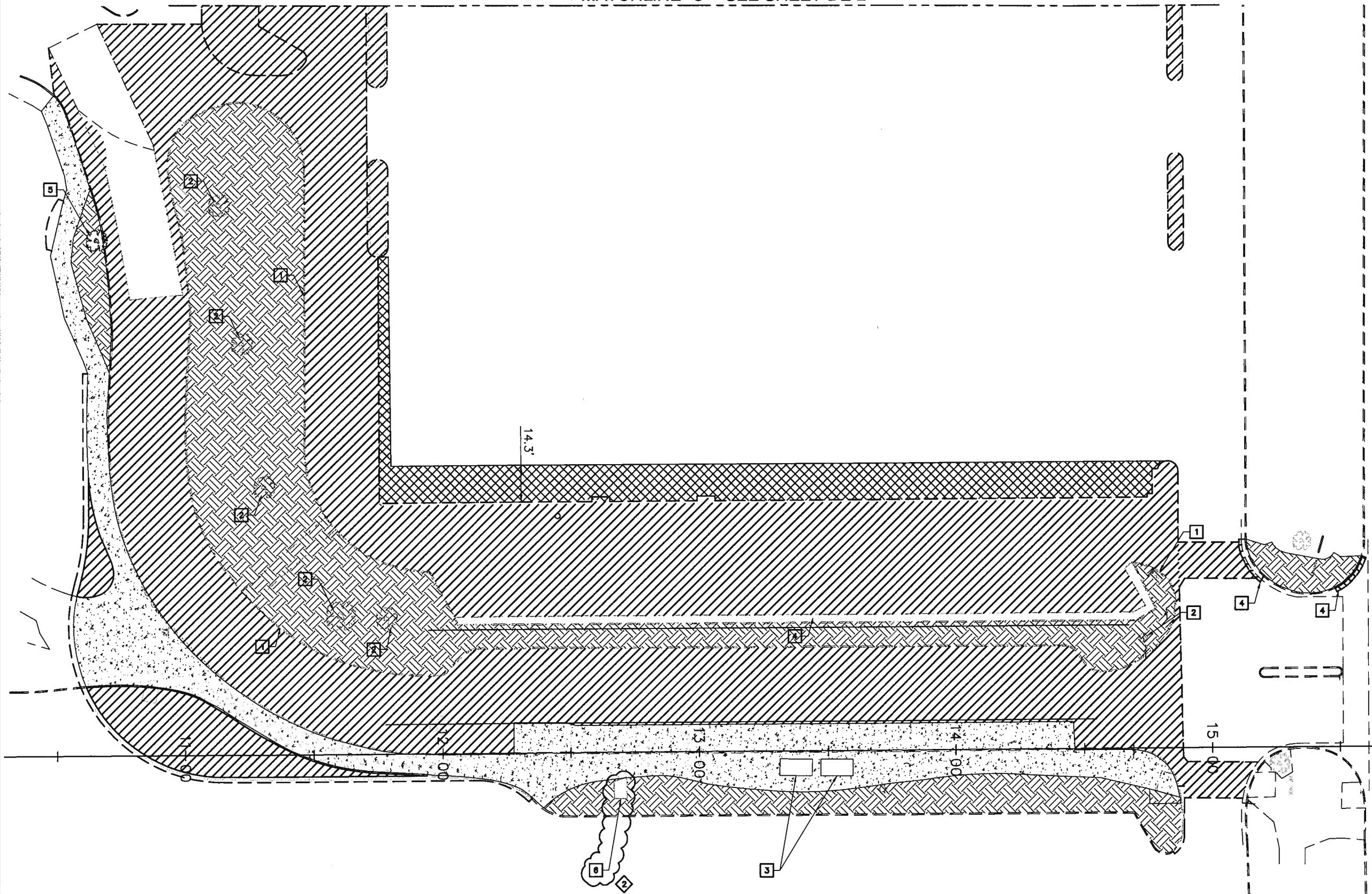


MATCHLINE "C" - SEE SHEET DE-2



**LEGEND:**

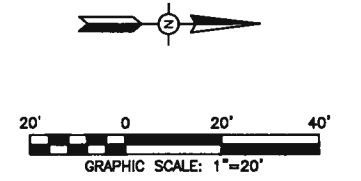
- REMOVE ASPHALT CONCRETE AND BASE ROCK TO SUBGRADE
- REMOVE CURB RAMP AND SIDEWALK
- REMOVE TOPSOIL AND SUBSOIL
- GRIND AC PAVEMENT -2" DEPTH
- SAWCUT LINE

**DEMOLITION NOTES:**

- 1 REMOVE EXISTING CURB
- 2 REMOVE EXISTING TREE AND ROOTS
- 3 REMOVE EXISTING SHELTER AND FOUNDATION
- 4 REMOVE EXISTING CURB AND GUTTER
- 5 PROTECT EXISTING TREE. FOR TREE PROTECTION DETAIL SEE 1-5
- 6 REMOVE EXISTING RETAINING CURB AND PPC SLAB.

**GENERAL NOTES:**

1. SAWCUT SHALL BE TO THE NEAREST SCORELINE AND ALSO 1' BEYOND THE PROPOSED LIP OF GUTTER AND CURB.
2. PROTECT IN PLACE ALL IMPROVEMENTS NOT IDENTIFIED FOR DEMOLITION.
3. FOR LIMITS OF DEMOLITION SEE LAYOUT PLAN, GRADING PLAN AND TYPICAL SECTIONS.
4. SEE ELECTRICAL PLAN AND DRAINAGE PLAN FOR ADDITIONAL DEMOLITION.



Jul 21, 2009 - 2:10pm  
 P:\2009\07-21-09\Diablo Valley College Transit Center\CAD\USA\Plan & Zoning\PC08B\_P040\_Plan 1.dwg

NO WORK SHALL BE DONE ON THIS SITE UNTIL BELOW AGENCY IS NOTIFIED OF INTENTION TO GRADE OR EXCAVATE.  
**Underground Service Alert**  
 Call: TOLL FREE  
 1-800-422-4133  
 TWO WORKING DAYS BEFORE YOU DIG



**DKS Associates**  
 TRANSPORTATION SOLUTIONS  
 1000 Broadway, Suite #450  
 Oakland, California 94607-4099  
 Tel.: 510-763-2061  
 Fax: 510-268-1739  
 THOMAS J. KRAKOW R.C.E. C48381 DATE

REVISIONS					
NO.	DATE	BY	DESCRIPTION	APPR.	DATE
1	7/09	MNL	ADDENDUM #2		

DRAWN: AMK  
 CHECKED: TJK  
 SCALE: HORIZ: 1"=20'  
 VERT:      

DESIGNED: WLM  
 DATE: 05/21/09  
 CAD FILE:  
 PROJECT NO:  
**Diablo Valley College Transit Center**  
**DEMOLITION PLAN 1**

APPROVED BY: \_\_\_\_\_  
**Diablo Valley College**

DRAWING NO.  
**DE-1**  
 SHT 7 OF 48



MATCHLINE "A" - SEE SHEET E-2

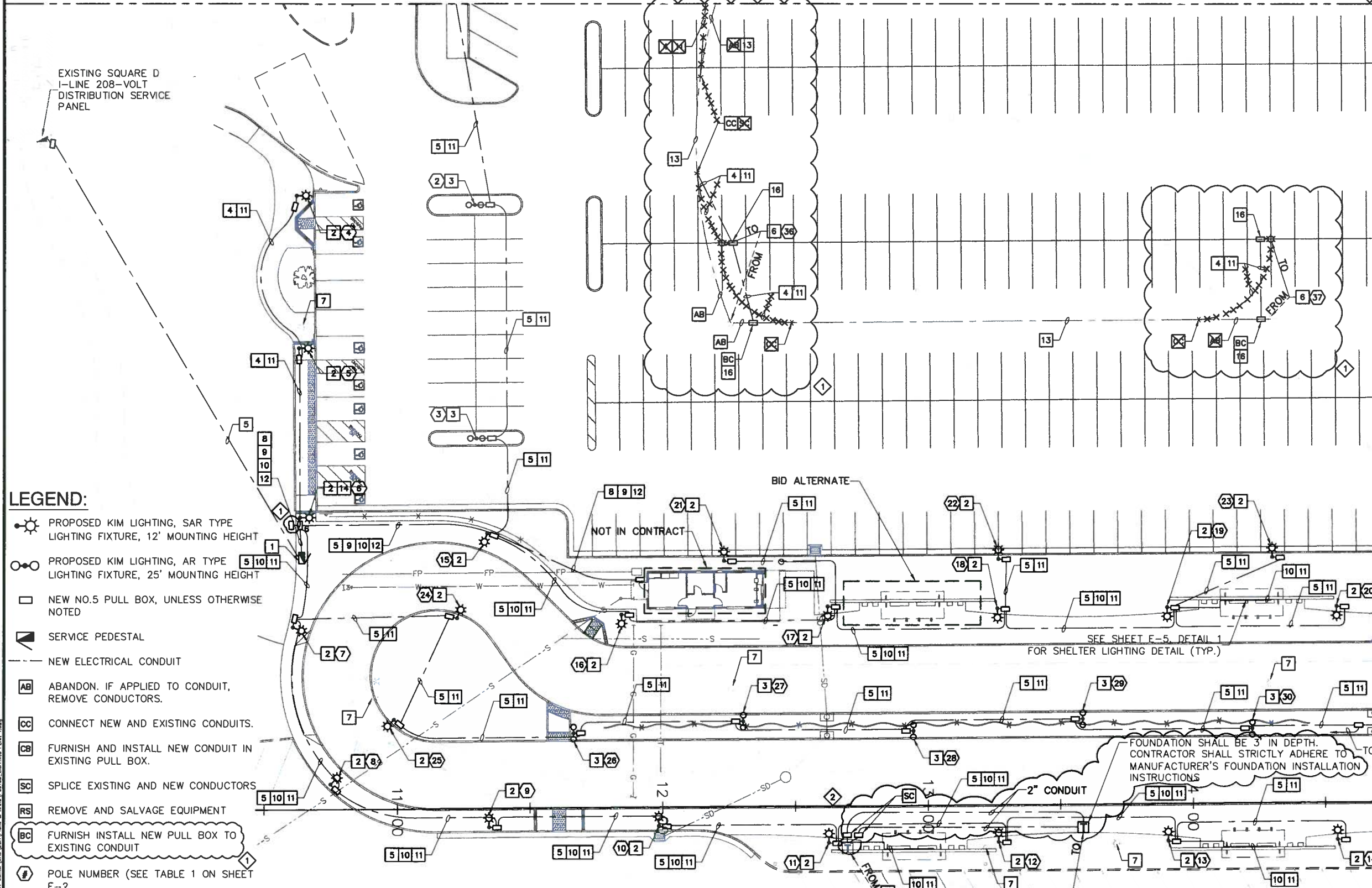
17 REPLACE EXISTING PULL BOX WITH NEW NO.5 PULL BOX.

**PROJECT NOTES:**

- 1 FURNISH AND INSTALL NEW SERVICE PEDESTAL, SEE SHEET E-4 FOR DETAIL.
- 2 FURNISH AND INSTALL KIM LIGHTING, SAR TYPE LIGHTING FIXTURE, SEE SHEET E-3 DETAIL 1.
- 3 FURNISH AND INSTALL KIM LIGHTING, AR TYPE LIGHTING FIXTURE, SEE SHEET E-3 DETAIL 2.
- 4 FURNISH AND INSTALL, 2#4 (LIGHTING), #4 CONDUCTOR (GROUND).
- 5 FURNISH AND INSTALL, 2#2 CONDUCTORS (LIGHTING), 1#2 CONDUCTOR (GROUND).
- 6 RELOCATE EXISTING LUMINAIRE AND CONSTRUCT NEW FOUNDATION MATCHING EXISTING FOUNDATION AT NEW LOCATION, (SEE DETAIL 9 ON SHEET E-3.) DEMOLISH EXISTING FOUNDATION TO 1' BELOW EXISTING GRADE AND BACKFILL TO MATCH WITH SURROUNDING PAVEMENT.
- 7 REMOVE AND SALVAGE EXISTING LUMINAIRE AND DEMOLISH FOUNDATION.
- 8 FURNISH AND INSTALL, 4#2 CONDUCTORS (LIGHTING), 2#2 CONDUCTORS (GROUND).
- 9 FURNISH AND INSTALL 3" CONDUIT.
- 10 FURNISH AND INSTALL 2#6 CONDUCTORS (SHELTER LIGHTING), 1#6 CONDUCTOR (GROUND).
- 11 FURNISH AND INSTALL 2" CONDUIT.
- 12 FURNISH AND INSTALL 3-3/0 CONDUCTORS (BUILDING), 1-3/0 CONDUCTOR (GROUND).
- 13 REMOVE EXISTING CONDUCTORS. FURNISH AND INSTALL 2#4 CONDUCTORS AND 1#4 CONDUCTOR (GROUND).
- 14 THIS LUMINAIRE SHALL HAVE A PHOTOELECTRIC UNIT.
- 15 RELOCATE EXISTING BLUE LIGHT PHONE.
- 16 FURNISH AND INSTALL TRAFFIC RATED LID ON PULL BOX.

**GENERAL NOTES: (LIGHTING)**

- 1. ALL EXISTING EQUIPMENT SHALL REMAIN IN PLACE UNLESS NOTED OR AS DIRECTED BY DVC REPRESENTATIVE.
- 2. LOCATION OF CONDUITS, PULL BOXES AND OTHER EQUIPMENTS SHOWN ON THE PLANS ARE APPROXIMATE AND MAY BE CHANGED TO SUIT FIELD CONDITIONS OR AS DIRECTED BY DVC REPRESENTATIVE.
- 3. CONTRACTOR SHALL NOTIFY 1-800-227-2600, UNDERGROUND SERVICE ALERT (U.S.A.) A MINIMUM OF 48 HOURS PRIOR TO COMMENCING ANY EXCAVATION.
- 4. ALL PULL BOXES ARE NO. 5 UNLESS OTHERWISE SHOWN, SEE SHEET E-4 DETAIL 2.
- 5. ALL CONDUITS ARE GRS UNLESS OTHERWISE NOTED.
- 6. EXISTING LIGHTING FIXTURES SHALL REMAIN OPERATIONAL UNTIL FINAL CONNECTIONS TO PROPOSED LIGHTING FIXTURES ARE COMPLETED.



**LEGEND:**

- PROPOSED KIM LIGHTING, SAR TYPE LIGHTING FIXTURE, 12' MOUNTING HEIGHT
- PROPOSED KIM LIGHTING, AR TYPE LIGHTING FIXTURE, 25' MOUNTING HEIGHT
- NEW NO.5 PULL BOX, UNLESS OTHERWISE NOTED
- SERVICE PEDESTAL
- NEW ELECTRICAL CONDUIT
- ABANDON. IF APPLIED TO CONDUIT, REMOVE CONDUCTORS.
- CONNECT NEW AND EXISTING CONDUITS.
- FURNISH AND INSTALL NEW CONDUIT IN EXISTING PULL BOX.
- SPLICE EXISTING AND NEW CONDUCTORS
- REMOVE AND SALVAGE EQUIPMENT
- FURNISH INSTALL NEW PULL BOX TO EXISTING CONDUIT
- POLE NUMBER (SEE TABLE 1 ON SHEET E-2)

NO WORK SHALL BE DONE ON THIS SITE UNTIL BELOW AGENCY IS NOTIFIED OF INTENTION TO GRADE OR EXCAVATE.

**Underground Service Alert**  
Call: TOLL FREE  
1-800-422-4133



**DKS Associates**  
TRANSPORTATION SOLUTIONS  
1000 Broadway, Suite #450  
Oakland, California 94607-4099  
Tel.: 510-763-2061  
Fax: 510-268-1739

KEVIN J. FEHON R.E.E. E16378 DATE

REVISIONS				DRAWN	DESIGNED
NO.	DATE	BY	DESCRIPTION	MNL	FXC
1	7/09	FXC	ADDENDUM #1	KJF	05/21/09
2	7/09	MNL	ADDENDUM #2		

CHECKED	DATE	CAD FILE:	PROJECT NO.
SCALE			
HORIZ: 1"=20'			
VERT:			

**Diablo Valley College  
Transit Center**

**ELECTRICAL SERVICE &  
LIGHTING PLAN**

APPROVED BY \_\_\_\_\_

**Diablo Valley College**

DRAWING NO.  
**E-1**

SHT 31 OF 48

J. 30, 2009 - 4:07PM  
 P:\P\05\06188-003\Diablo Valley College Transit Center\CAD\USA\Plans & Sheets\06188\_Lighting Plan\_1.dwg



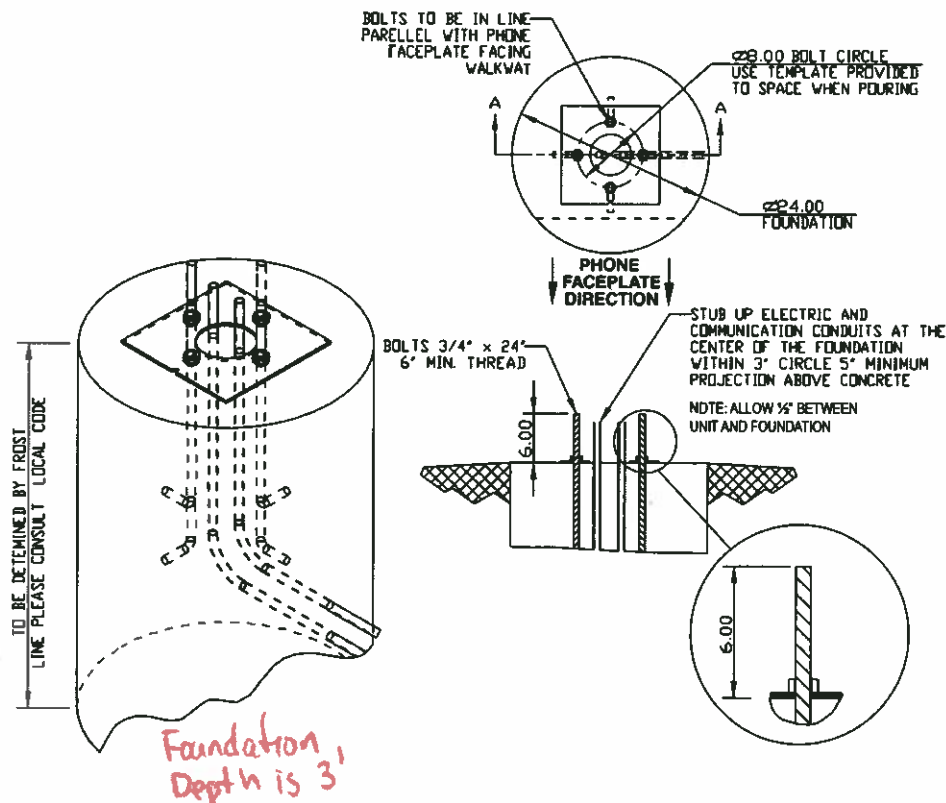
## Anchor Bolt Installation Instructions

### 1.0 FOUNDATION

- 1.1 **Conduit** – Electrical and telephone line conduit, with a maximum combined diameter of four (4) inches, should be run up through the center of the foundation hole. A minimum of four (4) inches and a maximum of six (6) inches of conduit above the finished grade level is required. To ensure proper grounding, a ½ inch x 8 foot copper rod should be inserted in the center of the foundation and tied to the steel bollard. (NOTE: Follow all national and local codes governing this installation).
- 1.2 **Pour the Foundation** – The foundation should be at least 24 inches in diameter, and to the correct depth for the frost line in your area, with a minimum depth of at least three (3) feet. (Follow your local building codes for foundations).
- 1.3 **Set the Anchor Bolts in the Wet Foundation** – Four (4) 24-inch L-shaped anchor bolts and an aligning template are supplied for anchoring the Code Blue unit. The bolts should be set into the foundation so that six (6) inches are left showing above the finished grade level. The anchor bolts should be aligned, using the supplied template, in such a way that the phone faceplate on the unit will face in the desired direction.

### 2.0 WIRING

- 2.1 Pull power and phone line up through the conduits – A minimum of two feet of wire must be available from the conduit for electrical and communications wiring.



All wiring must be installed and connected by experienced and certified personnel to meet local and national electrical codes, and will include a service disconnect.